

Non-Sterile Cleanroom Gowning Procedure

STEP 1: PRE-ENTRY



Bouffant/Hair Net
Be sure to contain all hair.



Shoe Covers
Contain all laces and tassels.



STEP 2: GOWNING



Gowning Gloves
Recommended for GMP Grade A-B (ISO Class 5) or cleaner.



Mask
Worn over or under hood. Bend nose piece first for a tight facial fit.



Hood
Ensure tight fit and proper face/neck seal.



STEP 3

Coverall
Step into the coverall. Be sure sleeves and upper garment do not touch bench or floor. Tuck shoulder panels from hood inside coverall before zipping up.



STEP 4

Boot Covers
Put on boots and pull boot covers (high-top shoe covers) over legs of coverall. If cross-over bench is used, transfer each foot to cleaner side of bench as boot cover is donned.



STEP 5

Goggles
Wear goggles/safety glasses when eye protection or additional particulate control is desired.



STEP 6

Cleanroom Gloves (optional)
Place hem of glove over cuff of sleeve. Put on over gowning gloves or remove gowning gloves and then put on cleanroom gloves.



Non-Sterile Cleanroom Gowning Removal Procedure

STEP 1: IN ORDER



Gloves
If two pairs of gloves are worn, remove top pair of gloves, then discard.



Goggles/Safety Glasses
Remove and properly contain.



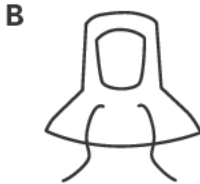
Boot Covers
Usually discard after each change.



STEP 2



Coverall
If coverall is to be used again, either hang it in a controlled environment or prepare for storage.



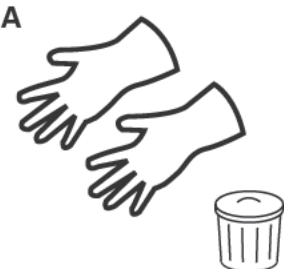
Hood
Hang in controlled environment.



Mask
Remove and usually discard.



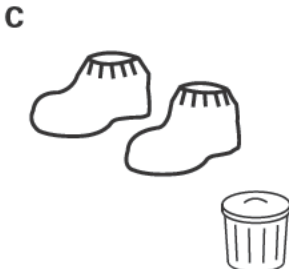
STEP 3



Gloves
It is recommended that gloves be discarded after each change.



Bouffant/Hair Net
Usually discard after each change.



Shoe Covers
Usually discard after each change.



DuPont™ SafeSPEC™ www.SafeSpecCleanroom.dupont.co.uk

The above applies to cleanroom apparel used for process protection purposes only. Do not re-use the apparel in the event it has been contaminated by a hazard. Gowning removal procedures for contaminated apparel will differ to avoid wearer contamination during the removal process. Worker safety must be taken into consideration during gowning and gowning removal.



Sterile Cleanroom Gowning Procedure

STEP 1: PRE-ENTRY



Bouffant/Hair Net
Be sure to contain all hair.



Shoe Covers
Contain all laces and tassels.



STEP 2: GOWNING



Wash hands using bactericidal soap and dry thoroughly.



First Sterile Gloves
Follow aseptic technique by touching only the inside of gloves. Sanitize.



Sanitize gloves after donning each article, if required.



STEP 3



Mask
Worn over or under hood. Bend nosepiece first for a tight facial fit.



Hood
Ensure tight fit and proper neck seal.



STEP 4

A
Coverall
Carefully remove coverall from package by holding the inside neck area.

Unfold garment while preventing it from touching the floor, your clothes or bench. Please exercise care when inserting leg to ensure donning snaps (if used) release and foot clears elastic ankle prior to transferring weight.



B
Don using aseptic technique.



STEP 5

A
Boot Covers
Put boot-covers (high-top shoe covers) on using aseptic technique. Tuck coverall legs into boot covers.

The first boot cover donned can now be placed in the "clean" side of gowning area.



B
Don second boot cover and place the other foot in the "clean" side of the gowning area.



STEP 6

A
Goggles
Adjust for a tight facial fit.



B
Second Sterile Gloves
Complete gowning steps by aseptically donning second pair of sterile gloves over the first pair, making sure the cuffs are securely over the sleeves.



C
Perform a final inspection in gowning room mirror prior to entry into the sterile cleanroom.



Sterile Cleanroom Gowning Removal Procedure

REMOVAL OF STERILE GARMENTS

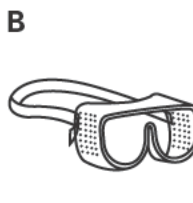
Enter gowning area from cleanroom and head directly to the "exit gown room" (preferred method).

If no "exit gown room" is available, go directly to the "non-clean" side, usually divided by a bench and/or line.

Remove items in reverse order of gowning procedure and discard.



Outer Gloves



Goggles



Boot Covers



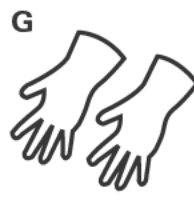
Coverall



Hood



Mask



Inner Gloves



Bouffant/Hair Net



Shoe Covers



DuPont™ SafeSPEC™ www.SafeSpecCleanroom.dupont.co.uk

The above applies to cleanroom apparel used for process protection purposes only. Do not re-use the apparel in the event it has been contaminated by a hazard. Gowning removal procedures for contaminated apparel will differ to avoid wearer contamination during the removal process. Worker safety must be taken into consideration during gowning and gowning removal.

L-30240 - 08/2016 - Copyright © 2016 DuPont. The DuPont Oval Logo and The miracles of science® are trademarks or registered trademarks of E.I. du Pont de Nemours and Company or its affiliates. All rights reserved.

